

## ✠ TODAY AT GRACE ✠

Organist: Janelle Hein      Elder: Al Rosendahl

Ushers: Paul Lentz; Brad Kitzman; Rick Nelson; Keith Radichel; Bob Vandever

Counting Team 1: Dan Degnan; Dale Enns; Larry Nelson; Ryan Oman; Pat Paplow; Phil Radichel

Hospitality Team 4: James & April Bomber; Rachelle Kanneh; Heidi Nelson; Bob & Suki Vandever

Church Cleaners: Oman      School: Nelson

## ✠ NEXT WEEK AT GRACE ✠

Ushers: Benno Sydow; Gary Gunther; Larry Nelson; Bill Rust; Jeff Stifter

Counting Team 2: Gary Gunther; Rick Nelson; Bill Rust; Bob Vandever; Clint Welker

Hospitality Team 5: Andrea Dahl; Pat & Dawn Paplow; Frank & Ann Radichel

Church Cleaners: Oman      School: Oman

## ✠ OUR SCHEDULE ✠

**Sun., Jan. 7:** 9:00 am – Bible Class & Sunday School  
10:00 am – Worship Service w/Lord's Supper (Epiphany 1)  
11:00 am – Hospitality

**Mon., Jan. 8:** 10:00 am – MN Pastoral Study Club

**Wed., Jan. 10:** 4:30 pm – Catechism for Public School Students  
7:00 pm – Midweek Bible Class Resumes

**Sun., Jan. 14:** 8:30 am – Choir Practice  
9:00 am – Bible Class & Sunday School  
10:00 am – Worship Service (Epiphany 2)  
11:00 am – Hospitality; 12:00 pm – Council Meeting

**Tue., Jan. 16:** Grace School Field Trip to Minnesota History Center

**Sat., Jan. 20:** 2:00 pm – Nicole Best Baby Shower

**Sun., Jan. 21:** Voters and Dorcas Guild Meetings

**Sat., Jan. 27:** 9:00 am – Grace Work Day

**Last Week's Stats:** Dec. 31 Sun.: 61

East Ridge State: Dec. 01		Sum: 01	
Sun. Offering:	Grace:	\$2,485.00	CLC: \$600.00
Weekly Need:	Grace:	3,300.00	CLC: 950.00
-Under / +Over:	Grace:	-815.00	CLC: -350.00
Year-to-Date Offering:		Grace: \$175,576.93	CLC: \$51,775.00
Total Budget for Year:		Grace: 172,400.00	CLC: 50,350.00
Difference from budget (+/-)		Grace: +3,176.93	CLC: +1,425.00
GLC Other:	258.00	Living Faith:	0.00
SAF Endowment:	0.00	MDF:	0.00
ILC Student Aid:	50.00	ILC Bldg.	200.00
Current Balances:		Parking Lot: 33,024.25	Tuition Aid: 4,065.12

## Grace Lutheran Church & School



460 75<sup>th</sup> Ave. NE

Fridley, MN 55432

Email: john.p.hein@gmail.com

Home Page: www.FridleyLutheran.org

Member: CHURCH OF THE LUTHERAN CONFESSION



**Pastor:** John Hein (Cell 612-408-1635)

**Phone:** 763-784-8784

**School Phone:** 763-784-6340

**Grades:** Kindergarten-8<sup>th</sup>

**Church Year:** Epiphany 1

**Date:** January 7, 2018

## ✠ WORSHIP INFORMATION ✠

### Hymns:

For Thy Mercy and Thy Grace  
TLH 127: As with Gladness Men of Old  
WS 777: Amazing Grace – How Sweet the Sound  
Communion: TLH 307; Meditative Music  
In Peace and Joy I Now Depart (bulletin)

Listening assistance is available. Please ask an usher.

### Worship Prep:

Psalm 72, TLH p. 138

### Liturgy:

WS, p. 12 (Communion)

### Scripture Reading:

Isaiah 60:1-6  
Matthew 2:1-12

### Sermon: Ephesians 3:2-12

<sup>2</sup> ... if indeed you have heard of the dispensation of the grace of God which was given to me for you, <sup>3</sup> how that by revelation He made known to me the mystery (as I have briefly written already, <sup>4</sup> by which, when you read, you may understand my knowledge in the mystery of Christ), <sup>5</sup> which in other ages was not made known to the sons of men, as it has now been revealed by the Spirit to His holy apostles and prophets: <sup>6</sup> that the Gentiles should be fellow heirs, of the same body, and partakers of His promise in Christ through the gospel, <sup>7</sup> of which I became a minister according to the gift of the grace of God given to me by the effective working of His power. <sup>8</sup> To me, who am less than the least of all the saints, this grace was given, that I should preach among the Gentiles the unsearchable riches of Christ, <sup>9</sup> and to make all see what is the fellowship of the mystery, which from the beginning of the ages has been hidden in God who created all things through Jesus Christ; <sup>10</sup> to the intent that now the manifold wisdom of God might be made known by the church to the principalities and powers in the heavenly places, <sup>11</sup> according to the eternal purpose which He accomplished in Christ Jesus our Lord, <sup>12</sup> in whom we have boldness and access with confidence through faith in Him. (NKJV<sup>TM</sup>)

## God's Grace Unveiled

# After-Word: GOD IS FAITHFUL

## Read 1 Corinthians 1:3-9

Everything about the Christian life depends on God's faithfulness. So, is God faithful to us or not?

The month of January was named for the Roman god "Janus;" the god of doors, gates, and bridges, and by extension, the 'passageway' between the Old Year and the New. In Roman mythology Janus was depicted with two faces: one face looking back, the other face looking forward. The month of January has the same two faces. In January we look back on the Old Year and look forward to the New. We review and anticipate, analyze and predict. We compose endless lists like "The Ten Worst Movies of 2016" or "The Ten Best Investments of 2017."

However, two faces looking in opposite directions can also suggest indecision or uncertainty. We may wonder: "What will happen to me in 2017? Will I stay healthy or grow sick? Will I succeed or fail, gain or lose? Will my marriage improve? Will my job last? Will my car need an expensive repair?" Amid such uncertainty, a phrase like 'have a happy New Year' has a hollow ring. Yet, there is an infinitely better phrase with which to welcome the New Year—in fact, three of the most important words you will ever know: **"God is faithful,"** 1 Corinthians 1:9. In Greek the phrase is more literally **"faithful is God."** Faithful is the first word in the sentence, and therefore the word of first importance.

### God's Faithfulness in Scripture

When faced with hardships and heartaches, we often question the faithfulness of God. Yet, this is precisely why Scripture contains so many declarations of God's faithfulness. **"Your word, O LORD, is eternal; it stands firm in the heavens. Your faithfulness continues through all generations,"** Psalm 119:89-90. **"The One who calls you is faithful and He will do it,"** 1 Thessalonians 5:24. **"So then, those who suffer according to God's will should commit themselves to their faithful Creator,"** 1 Peter 4:19. Or simply, **"God is faithful,"** 1 Corinthians 1:9.

We are emotional beings. And when we experience heartbreak or difficulties, our emotions often distort our view of God. This is why we must stay close to the Scriptures. For in the Scriptures God's own testimony about His faithfulness is loud and clear. He *is* faithful to us—always faithful, *semper fi*, even when we think He is not. We have His word on it.

### Faithfulness is in God's Nature

Paul wrote, **"If we are faithless, He will remain faithful, for He cannot disown Himself."** In other words, faithfulness is not only something God does; faithfulness is something God is. Faithfulness is part of God's divine nature. Consider what this means for your hope, home, and happiness in 2017. Because God is faithful, His faithfulness depends entirely on Him, not on you. Because God is faithful, His every thought and action toward you are guided by that faithfulness. Because God is faithful, even the difficulties He allows in your life are the result of His faithfulness. Because God is faithful, He will never stop loving you, protecting and providing for you, or forgiving you when you turn to Him in faith and repentance.

Because God is faithful, His every promise to you will be fulfilled—deliverance amid trouble, salvation, the forgiveness of sins in Jesus Christ, everything from daily bread to eternal life. **"He will keep you strong to the end, so that you will be blameless on the day of our Lord Jesus Christ. God, who called you into fellowship with His Son Jesus Christ our Lord, is faithful,"** 1 Corinthians 1:8-9.

### Only God can be so Faithful

God's other attributes also guarantee His faithfulness. God is omniscient, meaning He knows everything. And because He knows everything about you, He will faithfully give you what you need, not necessarily what you want. Jesus said, **"Your Father knows what you need before you ask Him,"** Matthew 6:8. You may not need to win the Publisher's Clearing House Sweepstakes. However, you may need a difficulty in your life to strengthen your faith and bring you closer to God.

God is omnipotent, that is, all-powerful. And as such, He will faithfully force even the worst circumstances to serve your best interests. God is also omnipresent, meaning, present everywhere. He will faithfully be with you in every condition, every situation, and every location; whether home or the office, whether in church or the operating room.

And because God is immutable, that is, unchanging, His faithfulness toward you will never change. As the author of Hebrews noted, **"Jesus Christ is the same yesterday, today, and forever,"** Hebrews 13:8. The same in love. The same in compassion. The same in forgiveness. The same in faithfulness.

Whether you are healthy or sick, rich or poor, young or old, male or female, a dignitary or a nobody—if you want to know how faithful God is to you, look at the cross of Jesus Christ. And read the glorious words of Romans 8: **"For I am convinced that neither death nor life, neither angels nor demons, neither the present nor the future, nor any powers, neither height nor depth, nor anything else in all creation, will be able to separate us from the love of God that is in Christ Jesus our Lord."**

Why? Because God is faithful.

(Written by Pastor Mark Weis, 1/2017)

## ✠ THE ANNOUNCEMENTS ✠

- ◆ **Special Voters Meeting Cancelled:** In order to get more preparation completed, the special Voters meeting is cancelled for today.
- ◆ **Voters and Dorcas Guild:** Will meet on Sunday, January 21.
- ◆ **Best Baby Shower:** A baby shower will be held for Nicole Best on Saturday, January 20, at 2 pm here at church. See the invitation on the bulletin board for more details. Please RSVP to Heidi Nelson.
- ◆ **CLC News:** Pastor Neal Radichel of Luther Memorial in Fond du Lac, WI, has received the call to Immanuel Lutheran of Mankato, MN. ✠ On New Years Day morning, the Pastor Paul Krause family (Watertown, SD) discovered that their son, Nathaniel, had died in the night. The funeral was yesterday. For his obituary and other information: [www.wightandcomes.com/memsol.cgi?user\\_id=2054511](http://www.wightandcomes.com/memsol.cgi?user_id=2054511).

## Grace Funds

**GENERAL FUND:** Contributions to this fund are used for budgeted expenses that normally are incurred in operating our church and Christian Day School. This includes such things as the pastor's and teacher's compensations, utilities, church operations, school supplies, pastor's mileage, etc.

**TUITION FUND:** Offerings are used to assist Grace students at Immanuel Lutheran High School in Eau Claire, WI.

**LIVING FAITH:** This program offers opportunities for members to help those of the congregation who are in need of food, clothing, necessary medical supplies, etc. Your offerings to this fund serve the physical welfare of your brethren.

**DORCAS GUILD FUND:** This is used to support the women's group and any of its activities.

**PROJECT FUND:** This is for any special projects the congregation decides to do.

## CLC Funds

**CLC GENERAL FUND (SOMETIMES CALLED "MISSIONS"):** Contributions to this fund support the General Budget of the CLC. They are used to subsidize U.S. and foreign missions and to subsidize operating expenses at Immanuel Lutheran High School and College in Eau Claire, WI.

**MISSION DEVELOPMENT FUND (MDF):** This fund provides support for mission projects both at home and abroad. Funds are used for such things as missionary exploratory efforts, instruction materials, self-help projects in foreign mission fields, storm relief in India and Africa, etc.

**PROJECT KINSHIP:** Contributions are used for the administration and support of orphanages in the foreign missions affiliated with the CLC. At times sponsorship is requested for specific orphans or seminary students in these foreign mission fields.

**CHURCH EXTENSION FUND (CEF):** This Fund is maintained for the purpose of providing loans to build or buy churches and/or parsonages within the CLC.

**ILC BUILDING FUND:** Contributions are used for the financing of any new building projects at ILC. At this time the Academic Center is being financed.

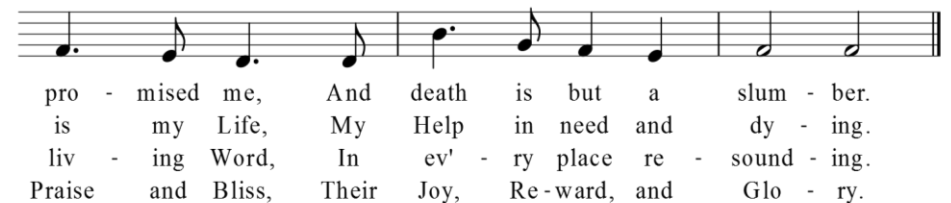
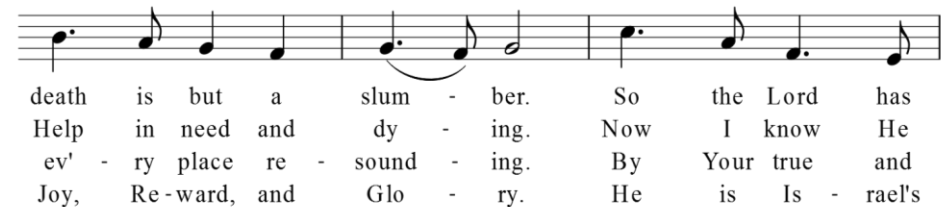
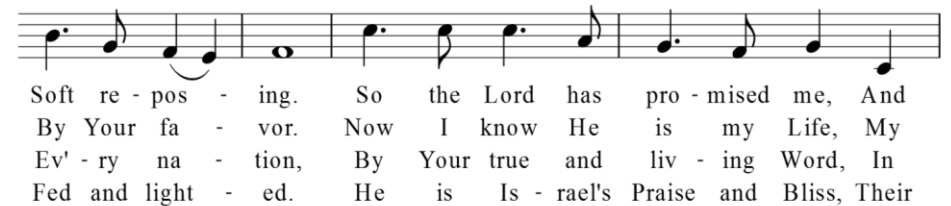
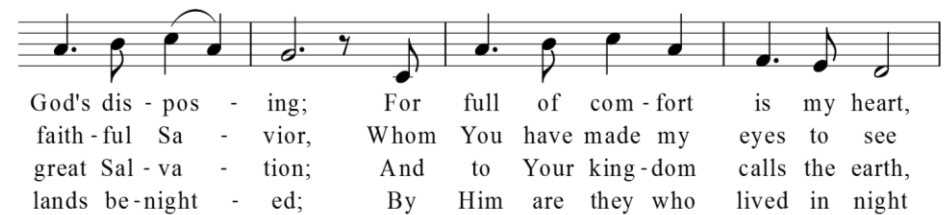
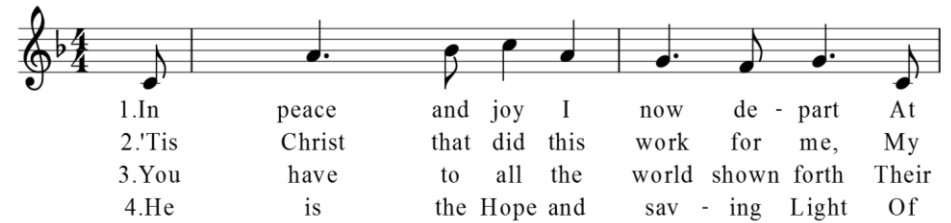
**ILC IMPROVEMENT FUND (IIF):** This fund has been used for various capital expenditures or special projects at ILC, including such items as remodeling, updating blacktop, furnace replacement, window replacement, painting, etc.

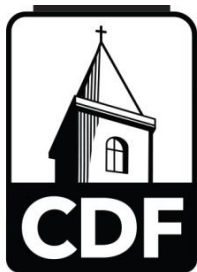
**ILC STUDENT AID:** This Fund provides scholarships, grants, and loans to students attending the high school, college, and seminary. Contributions may allow students to prepare for the preaching and teaching ministries who otherwise might be unable to attend ILC. Eventually this fund is expected to be self-supporting because of an endowment element and the repayment of student loans after graduation.

**ILC STUDENT AID ENDOWMENT:** This Fund accumulates in principle as donations are made with the annual investment gains funneled into the ILC Student Aid Fund.

## In Peace and Joy I Now Depart

Words: Martin Luther; Music: Lane Fischer





## RELIANCE UPON THE WORD

1 Cor 1:18-20: **“For the word of the cross is folly to those who are perishing, but to us who are being saved it is the power of God. For it is written, ‘I will destroy the wisdom of the wise, and the discernment of the discerning I will thwart.’ Where is the one who is wise? Where is the scribe? Where is the debater of this age? Has not God made foolish the wisdom of the world?”**

I felt like a fool. I'd been working a banquet and had an opportunity to share the gospel with a co-worker. He was nominally Christian but clearly knew next to nothing about Christian doctrine. I started to talk to him about the doctrine of election. Yup. I went there. And afterwards it just seemed like such a waste of the opportunity to talk about such a complicated doctrine.

But when I think back on it now, was it really that foolish? Sure election isn't exactly your go-to evangelism doctrine but I've thought about why I felt foolish. He might have found it offensive. He might not have understood it. Maybe I didn't explain it well enough. But those are all human reasons, human wisdom, human foolishness. When we think that way, we are overlooking something vital: the power of the cross. The preaching of the cross always seems foolish to human wisdom and human thinking. And since we are humans, we all too easily think like humans. But in truth, the preaching of the cross is the power of God. It is dynamite which blows apart human wisdom and self-reliance. It is the power of God for salvation.

Have you ever played on a team with someone who did everything? You are in right field but the center fielder runs over to catch balls that were hit at you? And gets there before you? Does your job better than you? The gospel is kind of like that. It is the power of God, the wisdom of God to save. That is, there is no other power and no other wisdom. Nothing needs to be added to it. It covers all the positions and does so far better than you ever could. Sometimes I think we forget that. Sometimes maybe we think evangelism is about saying exactly the right things in exactly the right way and in exactly the right tone of voice otherwise we feel we've failed. Really, it's only about one thing: Preach the law. Preach the gospel. And that's it. It's not about you and whether you've done a good enough job. It's about God's Word and God's power.

Now sure, there is a place for giving thought to how to present the gospel in a given circumstance. There are many doctrines in the Bible. All of them are

*Continued on opposite side*

focused on and lead to Christ. Consider a skilled woodworker. He has many different tools. He could likely use any number of them for a given task. But when he knows his tools and his work well, he can pick the one which may work best. There are many different ways you can use God's Word to share the gospel with someone. And some might be more suitable to certain people in certain situations. Peter's sermon on Pentecost started with the Old Testament which his audience knew well, it ended up at Christ. Paul, speaking to the Athenians, started with their "unknown god" and ended at Christ. There's no doubt that there can be wisdom in approaching different people in different ways. And there are times when you want to be careful what you say to someone. For instance, not everyone necessarily should hear the gospel from you. Jesus spoke only law to the young man who thought he was good enough.

But...you're not Jesus. And Jesus doesn't ask you to be. Just preach the word. You might not do it perfectly. You might talk about the doctrine of election when you'd be better off with the basics. They might not understand. They might not like it. They might be turned off. So what? The cross and the proclamation of the forgiveness of sins by that cross is the power. Rely on it. It will offend people when it is preached. It will also save people.

**A mission minded example** - Your tool is the Bible. If you're going to know how best to use it in a given circumstance, you should know it well. That means you need to study it, try to memorize sections of it (I suggest starting with the Psalms). Meditate on it. Ask your Pastor questions about it. Apply the sting of the law and comfort of the gospel to yourself. In doing this you will far better understand also how to apply it to others. As a specific suggestion try what a CLC congregation did for Bible Study. Read through the gospels and with each story ask "What does this say about Jesus?" "What doctrines from the catechism does this present?" "Who needs to hear this?" Perhaps try role playing a witnessing opportunity using that day's Bible study. For a similar approach, check out the books *Prepared to Answer* and *More Prepared to Answer* by Mark Paustian.

---

### 7 Habits of a Mission-Minded Congregation

Love for the Lost

Encouraging one another

Imitating the Great Commission

Strengthening the Individual

**Reliance Upon the Word**

Thinking of Ideas  
(Being Creative)

Desire to Achieve Unity



The **Committee of Domestic Fields** is a subcommittee of the CLC Mission Board. "The purpose of the Committee on Domestic Fields (CDF) is to make outreach ideas and material available to CLC congregations and to encourage them in carrying out the Great Commission of our Savior, Jesus Christ."